

On Premise Installation – VirtualBox



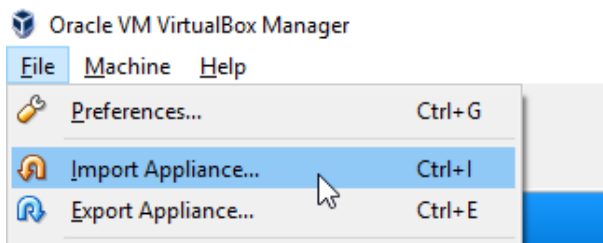
Both Dispatch Server and Customer Server installed on premise as VirtualBox appliance. Provided appliance uses Ubuntu 18.04 LTS operating system and contains the installer of WebAccess/VPN. Since this is the on premise version, sole customer is responsible for the run of the WebAccess/VPN system, its security and updates, including operating system provided in the appliance.



Prerequisites:

- **A computer with Internet access and VirtualBox installed.**
- **WebAccess/VPN .ova file** (VirtualBox appliance).
- **Domain name** for your WebAccess/VPN installation is needed. It is recommended to setup your own domain for standalone version. Advantech can provide a domain name for public IP only (subdomain of vpnportal.cloud domain).
- Recommended: A DHCP server in network that will lease fixed IP address to your bridged VirtualBox machine with WebAccess/VPN.

1. In your VirtualBox Manager, go to *File – Import Appliance...*



2. Choose the WebAccess-VPN .ova file to import:

Appliance to import

VirtualBox currently supports importing appliances saved in the Open Virtualization Format (OVF). To continue, select the file to import below.

C:\Users\jan.svoboda\vpnportal-standard-1.0.0.ova

3. Review the imported settings. Recommended parameters:

- CPU: 2
- RAM: 2 GB
- VideoRAM (display): 64 MB (accessible later in settings)
- Network: bridged (accessible later in settings)
- HDD storage size: 20 GB (accessible later in settings)

Check the *Reinitialize the MAC address of all network cards* option. Run Import.

Appliance settings

These are the virtual machines contained in the appliance and the suggested settings of the imported VirtualBox machines. You can change many of the properties shown by double-clicking on the items and disable others using the check boxes below.

Virtual System 1	
Name	Ubuntu_18.04_LTS-WebAccess/VPN-1.0.0
Guest OS Type	Ubuntu (64-bit)
CPU	2
RAM	2048 MB
DVD	<input checked="" type="checkbox"/>
USB Controller	<input checked="" type="checkbox"/>
Sound Card	<input checked="" type="checkbox"/> ICH AC97
Network Adapter	<input checked="" type="checkbox"/> Intel PRO/1000 MT Desktop (82540EM)
Storage Controller (IDE)	PIIX4

Reinitialize the MAC address of all network cards
Appliance is not signed

Restore Defaults Import Cancel

4. Wait while the appliance file is imported.

Importing Appliance ...: Importing appliance 'C:\Users\jan.svoboda\vpnport...'

Importing virtual disk image '\vpnportal-standard-1-disk001.vmdk' ... (2/3)

23%

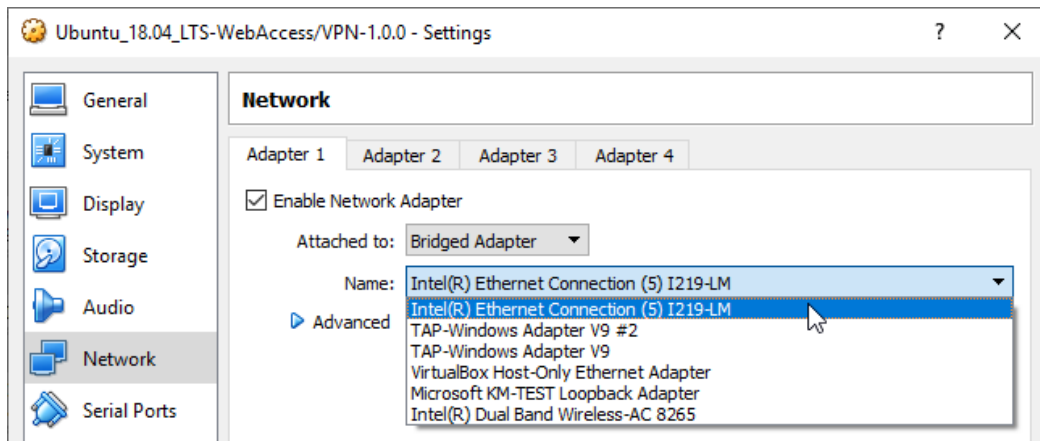
52 seconds remaining

5. After import, do not run the appliance immediately, but go to Settings and check the Network settings:

64-bit Ubuntu_18.04_LTS-WebAccess/VPN-1.0.0 Powered Off

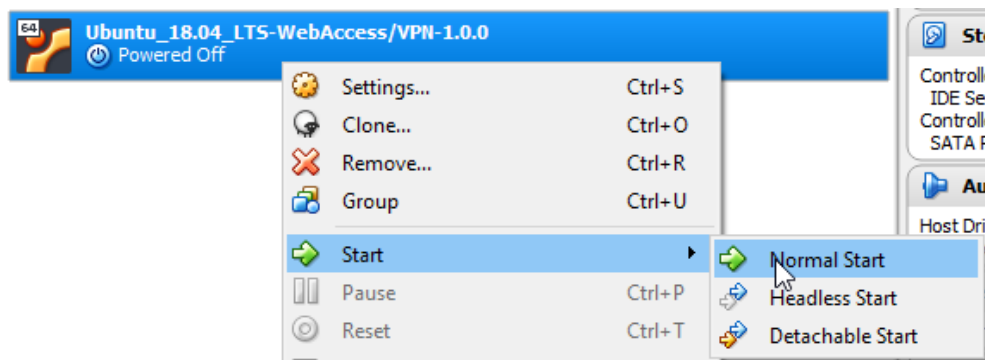
- Settings... Ctrl+S
- Clone... Ctrl+O

- In Network Settings check that there is the *Bridged Adapter* set in "Attached to:" option. Choose your physical network interface below.



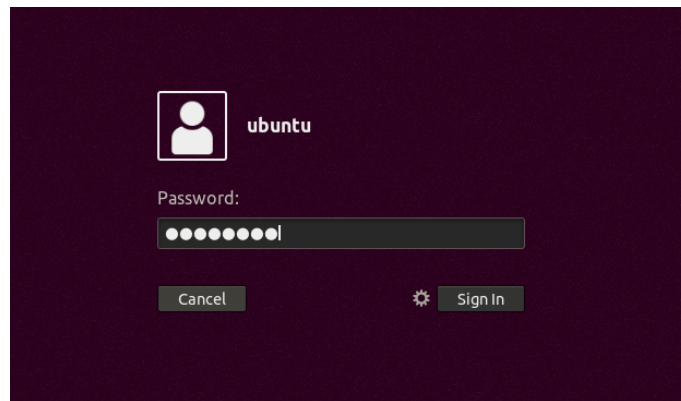
Note: the bridged network is needed so the WebAccess/VPN is available directly in your network. IP address of the WebAccess/VPN has to be accessible by routers and clients you want to add to WebAccess/VPN.

- Now run the appliance:



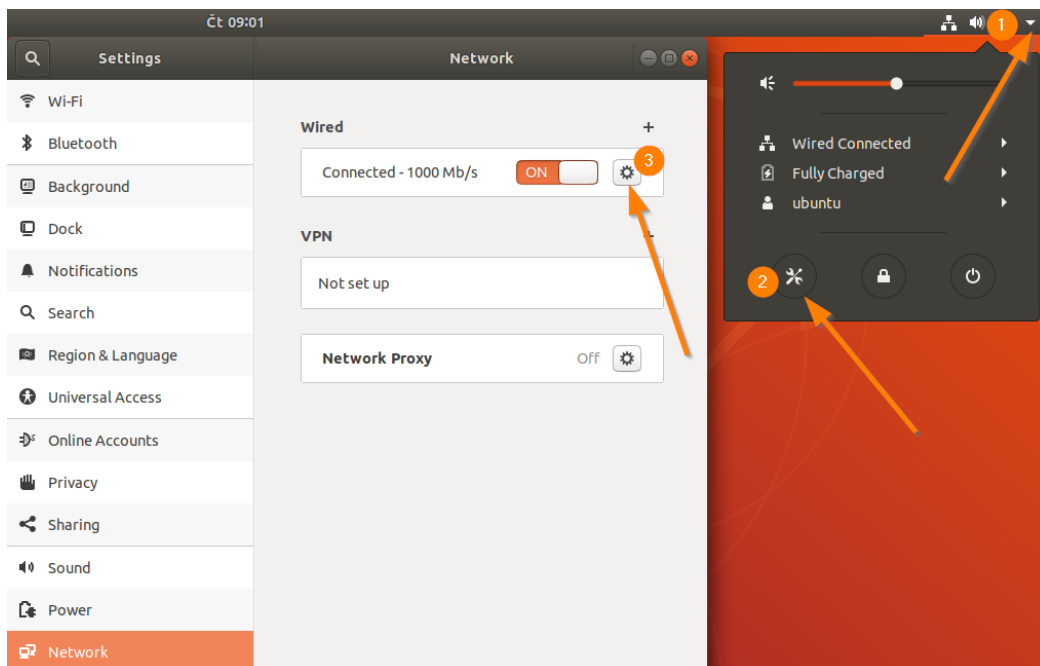
8. Wait for the system to boot and login to Ubuntu with these credentials:

- Username: ubuntu
- Password: wavpn123

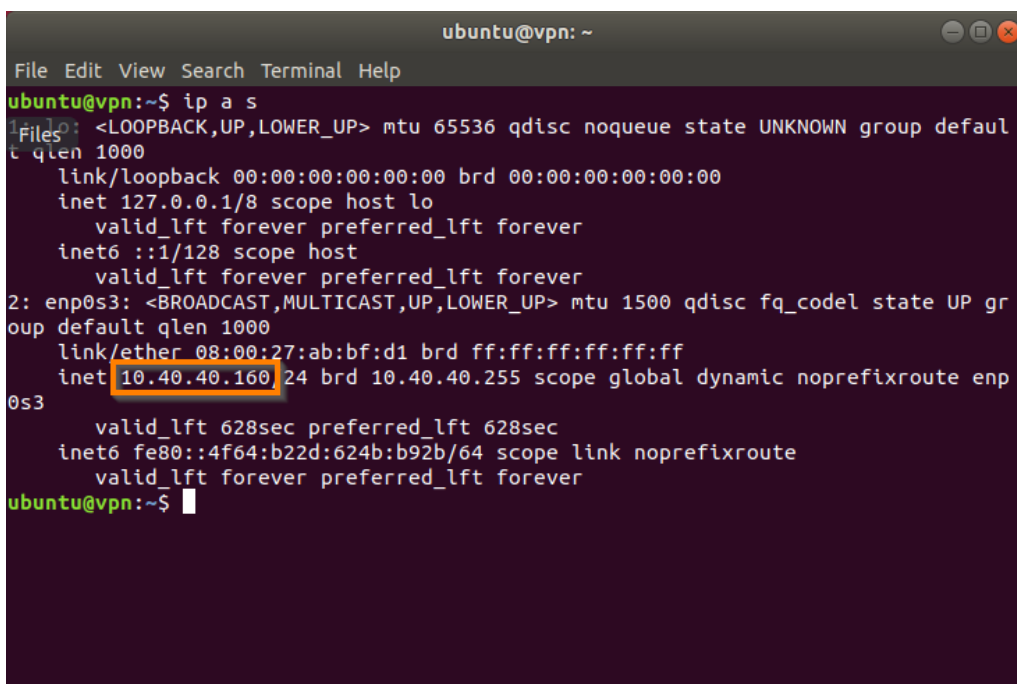
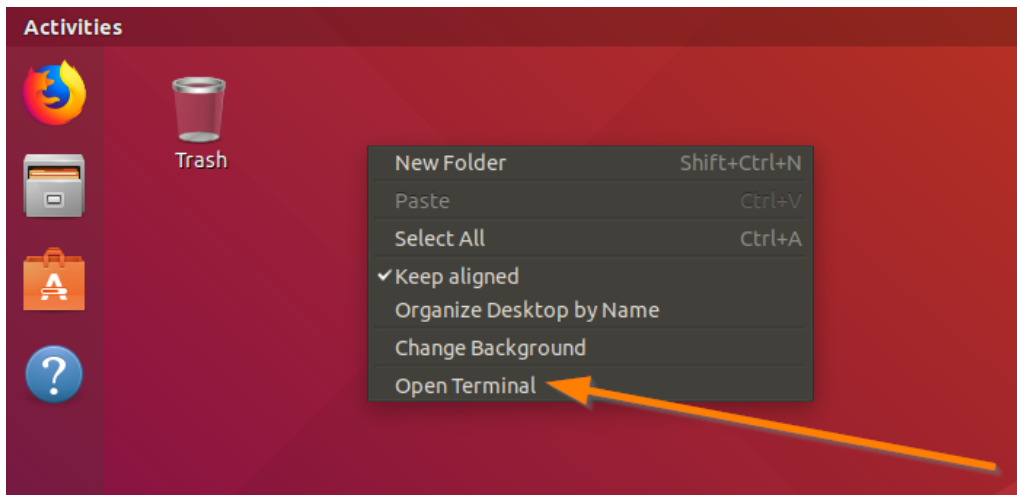


9. Find out the IP address of the appliance's bridged network interface. It is accessible via GUI in system settings, or in terminal after a command prompt. Both methods are described below:

In GUI system settings: Open Settings by clicking the top bar in the top right corner (1 in Figure below), choose settings icon (2) and then Network settings in menu. Click the settings icon (3) and read the IP address in *IPv4 Address* field.



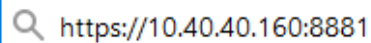
Via terminal: Run the terminal – right click on desktop and choose *Open Terminal*. Then use one of the commands "ip a s" or "ifconfig" to find out the IP address of physical interface (enp0s3).



10. Now go to your browser in superior system (where VirtualBox is running) or anywhere in the network where the IP address of appliance is accessible.

Access the WebAccess/VPN installation wizard – type explicit **https://** to the browser address bar, the IP address of appliance and port 8881. Example:

https://IP-OF-APPLIANCE:8881



https://10.40.40.160:8881

HTTPS explicit is necessary since HTTP is not redirected. Ignore invalid certificate authority notice and continue to site (CA will be configured in the first step of installation).

11. Follow the instructions in installation wizard. If you don't have Certification Authority to import (certificate file in CRT format and key file in PEM format), use wizard to create some for you.

Attention: If using your own Certificate Authority, the key file to be imported must not be password protected!

WebAccess/VPN

Installation Wizard

1 CA Setup 2 Network Settings 3 Domain Settings 4 Set Web Admin Password 5 EULA Agreement 6 Summary 7 Start Installation

All future communication certificates will be signed by the following Certificate Authority.

Import existing CA
 Create new CA

The following information will be inserted into the new CA certificate.

Common Name *	jan
Organization	ADVANTECH
Country	Czech Republic
Locality	Brno
Email	jan.svoboda@advantech.com

* Required field

Next

12. In Step 2, your virtual internal network is set (for OpenVPN with routers). Recommended values are network 10.8.0.0 and mask prefix chosen from the options available. Mask will affect a number of devices possible to connect to WebAccess/VPN. See the number of routers calculated under the form field. Number of devices per router is always 254 and can not be changed. Virtual network address and mask (affecting overall number of devices) can be changed later in setting, but only if there are no validated routers.

External IP is the IP address of the VirtualBox appliance.

WebAccess/VPN

Installation Wizard

1
CA Setup

2
Network Settings

3
Domain Settings

4
Set Web Admin Password

5
EULA Agreement

6
Summary

7
Start Installation

Virtual network specifies the pool of virtual addresses. First of them will be given to the VPN server, others will be allocated for routers and their local devices.

External IP specifies the non-virtual IP address of the VPN server. Ensure it is reachable from your routers.

Virtual Network * /

Result address pool: 509 routers, 254 devices per router

External IP *

* Required field

13. In Step 3, either enter your own domain name of WebAccess/VPN (recommended for on-premise installations), or create a new subdomain managed by Advantech (available for public IP only, it is a vpnportal.cloud subdomain).

WebAccess/VPN

Installation Wizard

- 1 CA Setup
- 2 Network Settings
- 3 Domain Settings
- 4 Set Web Admin Password
- 5 EULA Agreement
- 6 Summary
- 7 Start Installation

Enter the domain name for WebAccess/VPN's website (e.g. wavpn.mycompany.com).

Use my existing domain

Create new subdomain

Domain Name * .vpnportal.cloud

* Required field

Using your own domain name: when pointing your domain's DNS records to IP of your installation, add this additional "A" record to your domain: ***.mydomain.com** (or *.sub.mydomain.com if your installation will use a subdomain).

This matches all possible subdomains and is necessary for some features of WebAccess/VPN.

Using domain name from Advantech: Suitable only if your VirtualBox appliance has a public IP! Choose unused subdomain name of domain vpnportal.cloud. The form field will go red if the name typed in is already taken. Note that Advantech will set the DNS records and manage them for you, thus future changes are not flexible as it would be with your own domain.

14. In step 4, setup the password for Web user admin access.

The screenshot shows the 'Installation Wizard' interface. At the top, a progress bar indicates seven steps: 1. CA Setup, 2. Network Settings, 3. Domain Settings, 4. Set Web Admin Password (highlighted), 5. EULA Agreement, 6. Summary, and 7. Start Installation. Below the progress bar, the instruction reads: 'Set password for WebAccess/VPN's web administrator.' There are two input fields: 'Password *' and 'Password check *', both containing masked characters. A note below the fields states '* Required field'. At the bottom right, there are 'Back' and 'Next' buttons.

15. In step 5, read and agree with EULA:

The screenshot shows the 'Installation Wizard' interface at step 5. The progress bar highlights '5. EULA Agreement'. The main content area displays the text: 'You agree with EULA by pressing the Next button.' followed by the title 'End User License Agreement for ADVANTECH software'. Below this, the text '1. PREAMBLE' is followed by a paragraph: '1.1 This End User License Agreement (hereinafter "EULA") is a legally binding document specifying the legal relationship between the company Advantech B+B SmartWorx s.r.o., identification number 24148661, with its registered offices at Sokolská 71, Kerhartice, 562 04 Ústí nad Orlicí, registered with Regional Court of Hradec Králové, section C, record 31061'.

16. In step 6 overview the installation parameters.



Warning: Note that the installation wizard can be run only once and will be deactivated after installation.

WebAccess/VPN

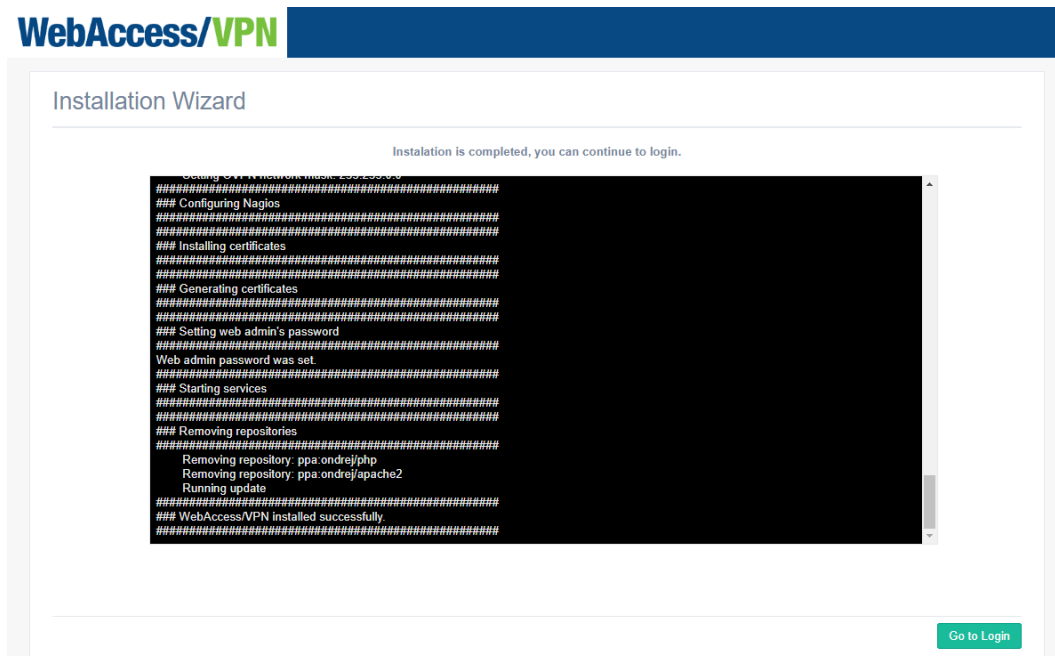
Installation Wizard

Now you can check your settings and start the installation if they are correct.

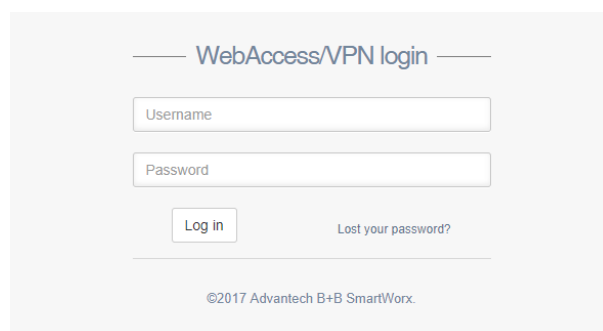
Certificate Authority: <will be created>
Common Name: Jan
Organization: ADVANTECH
Country: CZ
Locality: Brno
Email: jan.svoboda@advantech.com
External IP: 10.40.40.160
Virtual Network: 10.8.0.0/255.254.0.0
Website Domain: <will be registred>
Domain Name: jan.vpnportal.cloud

[Back](#) [Start Installation](#)

- Click *Start installation* and wait while "Installation in progress, please wait" remains on top of the page. After installation is done, the message will change to "Installation is completed, you can continue to login" and the button *Go to Login* will be active.



- Click that button, or go to to page **https://IP-OF-APPLIANCE** and login to WebAccess/VPN admin account (username **admin**, password you set in wizard). Installation wizard is now deactivated.



Default license (5 Routers, 2 Standalone VPN Clients) is active after installation. You can download router user modules for the next step directly from WebAccess/VPN (Administration, Application menu item).